

RYOBI®

AJP-1600

GB OWNER'S OPERATING MANUAL

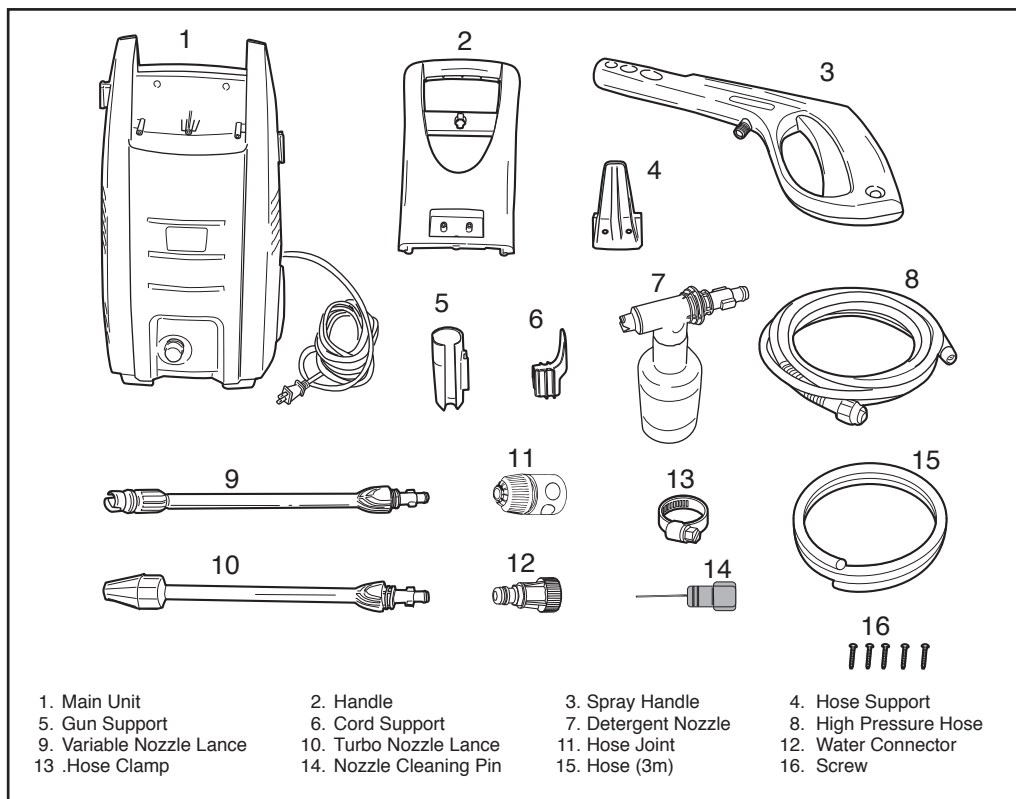


Carefully read and understand these instructions Before operating this high pressure washer.

Technical data

Power rating input:	1700 W
Rated pressure:	11 MPa
Allowable pressure:	Max. 15 MPa
Rated flow:	6.67 L / min
Suction height:	1 m
Max. water inlet pressure:	1.0 MPa
Rated temperature:	0 - 60°C
Weight (weight including accessories) :	7.5 Kg

Name of Parts:



Preparation

Before starting up your machine, we advise you to carefully read through this instruction manual. Follow all instruction to minimize the risk of injuries when using the machine.

Prior to operation

Before starting up your machine please check it carefully for any defects. If you find any, do not start up your machine and contact your distributor.

Especially check:

The insulation of the electric cable should be faultless and without any cracks. If the electric cable is damaged, it should be replaced by RYOBI authorized distributor.

⚠ Mains power supply connection

The following should be observed when connecting the machine to the electric installation:

- Check before operation that the local power supply is the same as the specifications on the rating label.
- This machine is equipped with universal motor with double insulation. It is not necessary to have earth connection.
- The electric installation shall be made by a certified electrician.
- It is strongly recommended that the power supply to the machine should include a residual current device (GFCI).
- Product protection degree: IPX5

General safety regulations and accident prevention

It is essential that you read the safety regulations and operating instructions in their entirety and follow the information contained therein in order to eliminate the possibility of an accident or potentially dangerous situation from occurring while working with the machine.

- The power plug must be plugged into a properly installed socket. The power supply should include a residual current device for max. 30 mA.
- Always check the device, the mains cable and the plug before using the machine. Only operate the device when it is in good working order and has not been damaged in any way. Damaged parts must be immediately replaced by a qualified electrician.
- Always pull the power plug out of the socket outlet before doing any work on the machine, before changing the nozzle and whenever it is not being used.
- **Warning!** Unsuitable extension cable can be dangerous.
- If an extension cable is used, the plug and socket must be of watertight construction.
- Only use suitable extension cable when working outdoors. Extension cable must have a minimum cross-section of 1.5 mm².
- **Warning!** This device was developed to be used with cleaning agents supplied or recommended by the manufacturer. The use of any other cleaning agents or chemicals can negatively affect the safety of the device.
- Cable connections should be kept dry and off the ground. Always uncoil the extension cable completely to avoid heat damage to the cable.
- **Warning!** Do not use the device when other persons or animals are in the near vicinity unless they are wearing appropriate protective clothing.
- **Warning!** High pressure jets can be dangerous when the machine is not use properly. Do not direct the jet toward persons, animals, live electrical equipment or the device itself.
- Do not direct the jet against yourself or other s in order to clean clothes and footwear.
- Children should be supervised to ensure that they do not play with the appliance.
- This appliance is not intended for use by persons (including children) with reduced physical, sensory or mental capabilities, or lack of experience and knowledge, unless they have been given supervision or instruction concerning use of the appliance by a person responsible for their safety.
- **Warning!** High pressure hoses, fittings and couplings are important components for the safety of the device. Only use high pressure hoses, fittings and couplings that are recommended by the manufacturer.
- In order to ensure the operational safety of the device, only use genuine manufacturer's replacement parts or parts that have been approved by the manufacturer.
- Do not operate the device if the mains cable or other important parts of device – e.g. safety related elements, high pressure hose, spray pistol – are damaged.
- Do not pull or carry the electric tool by its mains cable. Protect the mains cable from becoming damaged by oil, solvents and sharp edges.
- Keep your place of work tidy.
- Ensure that the switch is turned off when connecting the machine to the power supply.
- Wear the suitable work clothes.
- Check your machine to ensure that it is in good working order. If it is not functioning properly, have it checked by an RYOBI authorized distributor. Have all maintenance and inspection work carried out only by RYOBI authorized distributor.
- The water jet that emerges from the high pressure nozzle produces a 'kickback' on the spray handle. Therefore, make sure that you have a solid footing and that you have a firm hold of the handle grip. In order to protect yourself from possible flying objects (that are released due to the high pressure).
- The high pressure jet can damage vehicle tyres and tyre parts. Keep a distance of at least 30 cm from the object being cleaned.
- If there is a power failure while you are using the machine, be sure to switch off the machine for safety reasons.
- The electric pump always must be able to draw on a sufficient supply of water. Dry operation causes severe damage to the seals.
- Disconnect from the power supply before carrying out user maintenance.
- Only use original spare parts from the manufacturer or approved by the manufacturer.
- If the supply cord is damaged, it must be replaced by RYOBI authorized distributor in order to avoid a hazard.
- Never use the machine in an environment where there could be a danger of explosion. If any doubt arises, please contact RYOBI authorized distributor.
- It is not allowed to clean asbestos-containing surfaces with high pressure.
- This machine must not be used at temperatures below 0°C.
- The electric supply connection (for example, connection the RCD or fix wiring) shall be made by a qualified electrician and comply with IEC60364-1: Low-voltage electrical installations.

Safety devices

Safety lock on spray handle

The spray handle features safety lock. When the lock is activated, the spray handle cannot be operated.

Motor pump protection

The motor is equipped with a motor circuit breaker switch. When the motor starts to run hot, it is cut out by this switch. Switch off the machine. Wait 5 ~ 10 minutes before using the device again. Try to determine the cause of the fault. If the problem repeats itself, please contact RYOBI service centre.

Using cleaning agent

Fill detergent tank with an appropriate cleaning agent. BY PULLING BACK THE nozzle hair on the lance, the device will change to low-pressure operation and detergent will be added automatically.

Operating instructions

Purpose

The machine is designed to clean vehicles, machines, buildings, facades, etc. in the private sector.

Areas of application

- Never use the machine in potentially explosive areas under any circumstances!
- The operating temperature must be between 0°C and +60°C.
- The machine consists of an assembly with a pump, which is encased in a shock absorbing housing. For an optimal working position the machine comes with a lance and a non-slip handle grip, whose shape and configuration comply with the applicable regulations.
- Do not cover or modify the lance or the spray nozzles in any way.
- The machine is designed to be used with cold or lukewarm (max. 60°C); higher temperatures can damage the pump.
- Do not use water that is dirty, gritty or contains any chemical products, as these could impair operation and shorten the life of the machine.

Connection

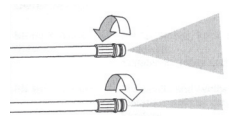
1. Screw the high pressure hose onto the water outlet pipe and the spray handle by turning it clockwise. Prior to operating the machine please ensure that the high pressure hose has been completely uncoiled. Whilst the machine is in operation the hose **MUST NOT** loop.
2. Check that the filter is mounted in the water inlet and that it is not blocked up.
3. The inlet filter must always be fitted in the water inlet to filter out sand, limestone and other impurities, as they will damage the pump valves.
CAUTION: Failure to fit the filter will invalidate the guarantee.
4. Screw the water inlet connector onto the water inlet.
5. Insert the lance into the spray handle and turn it to lock it. Make sure that the spray handle is locked in the OFF position by pulling out the locking lever and locating it on the tab in the handle grip.
6. Mount the nozzle or any other equipment you want to use.
7. Connect the water inlet hose (min. hose diameter 13mm) to the water tap and machine! Ask your local plumber about this.
8. Connect the machine to power supplies.

Starting up

1. Open the water inlet. Press the safety lock on the spray handle and pull back the trigger lever in order to bleed the trapped air out of the device.
2. Turn on the switch on the device.
3. To temporarily turn off, release the trigger lever, at which point the device goes to standby. As soon as you press the trigger lever again, the machine restarts.
4. To completely turn off the machine, press the ON/OFF switch on the device.
5. The shape of the water jet can be changed from concentrated to flat jet by turning the nozzle.
6. Using the lance with rotating nozzle is particularly effective in cases of very stubborn dirt.

Correctly using the device

1. The machine must be set upright on a level, stable surface.
2. The spray lance is affected by a thrust during operation – therefore, always hold it firmly with both hands.
IMPORTANT: Point the nozzle at the ground.
3. Activate the trigger of the spray handle.
4. Always adjust the distance and thus the pressure of the nozzle to the surface which is to be cleaned. **NOTE:** The spray angle can be adjusted at the nozzle.



NOTE: Do not cover the machine during operation. If the machine is left or not used, it must be switched off on the start.
Stop switch (press the ON/OFF switch immediately).

It is normal for the pump to leak a little; this is necessary to avoid damage to the pump when it is at a standstill.

End of operation

1. Press the ON/OFF switch
2. Disconnect the plug from the socket.
3. Shut off the water supply and activate the spray handle to relieve the machine of pressure.

Maintenance and storage

WARNING! Always disconnect the plug from the socket prior to maintenance or cleaning.

To ensure a long and problem free working life, please take the following advice:

- Wash off water hose, high pressure hose, spray lance and accessories before mounting.
- Clean the connectors of dust and sand.
- Rinse the detergent spraying attachment after use.

Any repair should always be made by RYOBI authorized distributor with original spare parts.

Cleaning of lance nozzle

A clogging up in the nozzle causes a pump pressure which is too high. This is why cleaning is required immediately.

1. Stop the machine and disconnect the nozzle.
2. Clean the nozzle. **IMPORTANT:** The cleaning tool should only be used when the spray lance is detached!
3. Flush the spray lance backwards with water.

The inlet filter must always be fitted inside the water inlet pipe to filter out sand, limestone and other impurities, as they will damage the pump valves.

Checking the water intake filter

Clean the water inlet filters regularly once a month or more frequently in accordance to use. Periodically check the filter in order to prevent clogging, which could jeopardize operation of the pump. To do this, unscrew the connection coupling for the water inlet hose from the device and clean the exposed inlet sieve by placing it under running water.

CAUTION: Failure to fit the filter will invalidate the guarantee.

Cleaning of machine vents

The machine should be kept clean so as to let cooling air pass freely through air vents.

Storage

Pump, hose and accessories should always be emptied of water prior to storing as follows:

1. Stop the machine (press the ON/OFF switch and detach water hose and accessory).
2. Restart the machine and activate the trigger. Let the machine run until no moving water runs through the spray handle.
3. Stop the machine, unplug and detach high pressure hose.
4. Long periods of nonuse: If the machine is going to be stored for longer periods of time (i.e. over three months) in a room where frost could develop, it is recommended that the machine be filled with an antifreeze solution (similar to the antifreeze solutions used for vehicles).
5. When the device is not used for an extended period of time, lime deposits begin to form in the motor pump, which in turn can lead to starting difficulties.

NEVER START UP A FROZEN MACHINE.

Frost damages are not covered by the guarantee!

Environmental protection



Recycle unwanted materials instead of disposing of them as waste. All tools, hoses and packaging should be sorted, taken to the local recycling centre and disposed of in an environmentally safe way.

Troubleshooting

Fault	Cause	Remedy
The pump does not run when the switch is pressed.	The plug is damaged. There is insufficient voltage. The pump is locked. The thermal relay has triggered.	Check the plug and fuses to see if they are okay. Manually turn over the motor. Let the motor cool down.
The pump runs, however no pressure is generated.	The intake filter is clogged. Air is being drawn in at the connectors. The inlet and outlet valves are clogged or worn. The diameter of the nozzle hole is too large.	Clean the filter. Check the intake connection fitting and the hose connectors. Clean or replace. Check and replace.
The operating pressure is irregular.	Air is being drawn in. The valves are clogged and worn. The seals are worn.	Check the intake connectors. Clean and replace. Check and replace.
The motor suddenly stops.	The thermal relay has triggered due to overheating.	Check the voltage. Turn off the switch and let the motor cool down for a few minutes.
The pump drips.	The seals are worn.	Check and replace (professional repair shop)
There is a loss of pressure.	The nozzle is worn. The valves are dirty or clogged. The valve seals are worn. The seals are worn. The filter is clogged.	Change the nozzle. Check, clean, exchange. Check and /or exchange. Check and /or exchange. Check and /or clean.
There is excess noise.	Air is being drawn in. The valves are worn, dirty or clogged. The bearings are worn. The water temperature is too high. The filter is dirty.	Check intake lines. Check, clean, exchange. Check and /or exchange. Lower the temperature to below 60°C. Check and /or exchange.
Expelled water is mixed with oil.	The sealing rings (water + oil) are worn.	Check and /or exchange.
Water leaks from the pump head.	The seals are worn. The O-ring of the seal set is worn.	Exchange the seal. Exchange the O-ring.
When the switch is pressed, the motor hums but does not start.	The mains voltage is lower than that specified. The pump is blocked or frozen. The extension cable is insufficient (cross section too small, cable too long)	Check to see that the extension cable is sufficient. Exchange the extension cable for one that is sufficient.

Discarding the machine

Carry out the following safety measures immediately, if you are no longer going to use the machine:

- Pull out the plug and make the machine inoperable.
- Store the machine in an area that cannot be reached by children.
- Do not use any parts from the used machine as replacement parts.
- Disassemble the machine and discard the individual parts in accordance with the regulation reformed in your area.

SAVE THESE INSTRUCTIONS

RYOBI POWER EQUIPMENT WARRANTY

Subject to the warranty conditions below, this RYOBI tool (hereinafter called "the Product"), is warranted by Ryobi (herein called "the Company") to be free from defects in material or workmanship for a period of 24 months from the date of original purchase covering both parts and labour. Under the terms of this warranty, the repair or replacement of any part shall be the opinion of the Company or its authorised agent. Should service become necessary during the warranty period, the owner should contact the authorised Ryobi retailer from whom the product was purchased, or the nearest Company branch office. In order to obtain warranty service, the owner must include the Sales Docket and Warranty Certificate to confirm date of purchase. This Product is sold by the dealer or agent as principal and the dealer has no authority from the Company to give any additional warranty or guarantee on the Company's behalf except as herein contained or herein referred to.

Warranty Conditions

This warranty only applies provided that the Product has been used in accordance with the manufacturer's recommendations under normal use and reasonable care (in the opinion of the Company) and such warranty does not cover consumable components, damage, malfunction or failure resulting from

misuse, neglect, abuse, or used for a purpose for which it was not designed, or is not suited and no repairs, alterations or modifications have been attempted by other than an Authorised Service Agent. This guarantee will not apply if the tool is damaged by accident or if repairs arise from normal wear and tear.

Accessories such as bits, blades, sanding discs, cutting lines, etc., are excluded from this guarantee. Normal consumable parts, such as carbon brushes, bearings, chucks, cord assembly's, spark plugs, recoil pulleys and bump head assembly's are specifically excluded from this guarantee.

The Company accepts no additional liability pursuant to this warranty for the costs of traveling or transportation of the Product or parts to and from the service dealer or agent - which costs are not included in the warranty.

Nothing herein shall have the effect of excluding, restricting or modifying any conditions, warranty, right or liability imposed, to the extent only that such exclusion, restriction or modification would render any term herein void.



STEVENS & CO (Pty) Ltd
604, 16th Street, Randjespark
Midrand, South Africa

P O Box 4059
HALFWAY HOUSE
1685, South Africa

Tel: +27 (11) 357-9600
Fax: +27 (11) 805-5541
email: stevens@ryobi.co.za

THIS WARRANTY FORM SHOULD BE RETAINED BY THE CUSTOMER AT ALL TIMES.

For your record and to assist in establishing date of purchase (necessary for in-warranty service), please keep your purchase docket and this form, completed with the following particulars.

PURCHASED FROM:.....

ADDRESS OF DEALER:.....

DATE:..... MODEL NO..... SERIAL NO.....

Present this form with your Purchase Docket when Warranty Service is required.